

Re-instating concrete artwork



Re-instating concrete artwork



Artwork completed



Concrete cutting - 1.2m diameter floor saw



Stitch Coring concrete over shallow utilities



Test panel - Exposed aggregate finish



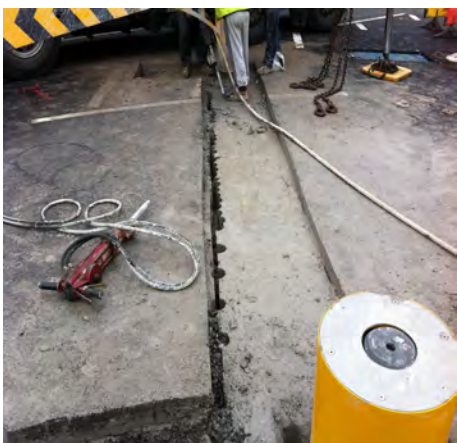
Salisbury Station



Salisbury Station - Cellar exposed



Salisbury Station - Completed Works



Extracting gate 0.5m from HV Cable



Extracting the gate (12t)



Cleaning off concrete ready for re-use



Waterloo Station- Site set up



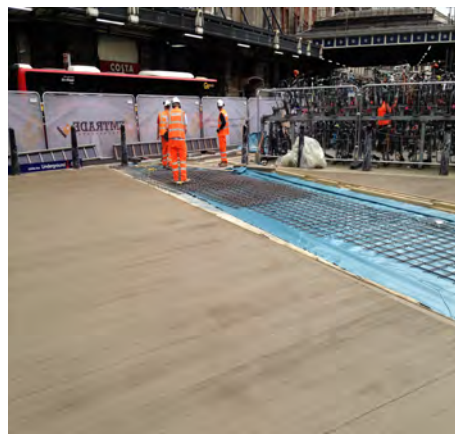
Waterloo Station- New kerb line



Bollards modified and surface mounted



Waterloo - 7 x 5m bays



Waterloo - 1st pour



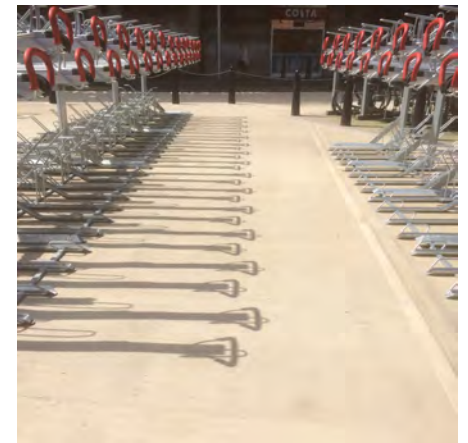
Waterloo - Delivery of cycle stands



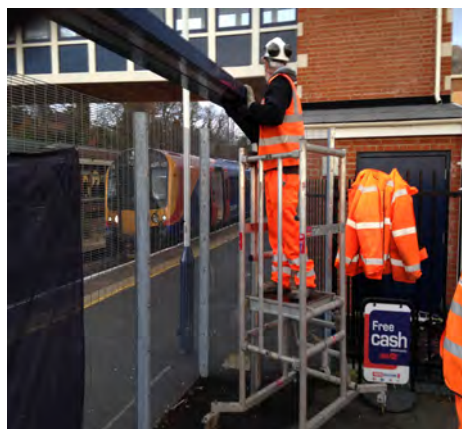
Waterloo - Completed Works



Waterloo - Completed Works



Waterloo - Completed Works



Farnborough - Dismantling Existing Structure



Excavating for ducts and RC bases



Farnborough Station - Completed works



Basingstoke Station - Manual removal of tree roots (Engineering hours)



Basingstoke Station - Only access to platform using telehandler



Night Shift Excavation For New Kerb Line



150 ton truck crane working at 35m



Installing PA System



Installing PA System



Derby Civic Hall (HVM)



Derby Civic Hall (HVM)



Re-instatement works



RWP's 4 x 160mm x 260m 1:200 fall Connections to upper deck



Termination into 1200mm Manhole



Uni-Strut Structure in place